

Welcome to Grenoble !

M1 AM and MOSIG
Opening meeting for foreign students
August 28th, 2023



SUMMARY

- **Your registrar's offices**
- **MUSE : Maison Universitaire des Services à l'Etudiant**
- **ISSO : International Students & Scholars Office**
- **Health centers for students**
- **ADE Student : your schedule in real time**
- **University libraries**
- **Administrative procedure for registration at INP ENSIMAG**
- **Administrative procedure for registration at UGA IM2AG**
- **Useful links**

Registrar's offices

2 institutions : INP and UGA

2 Schools : Ensimag and UFR IM²AG registrar's offices (student management office)

stephanie.leyssieux@univ-grenoble-alpes.fr

(Grenoble UGA-UFR IM²AG – building F ground floor **M1 MOSIG**)

berengere.duc@univ-grenoble-alpes.fr

(Grenoble UGA-UFR IM²AG – building F ground floor **M1 AM**)

aurelien.minet@grenoble-inp.fr

(Grenoble INP-Ensimag – E001, building D, ground floor **M1 AM and MOSIG**)

Where to find us...

- University Grenoble Alpes Saint Martin d'Hères / Gières

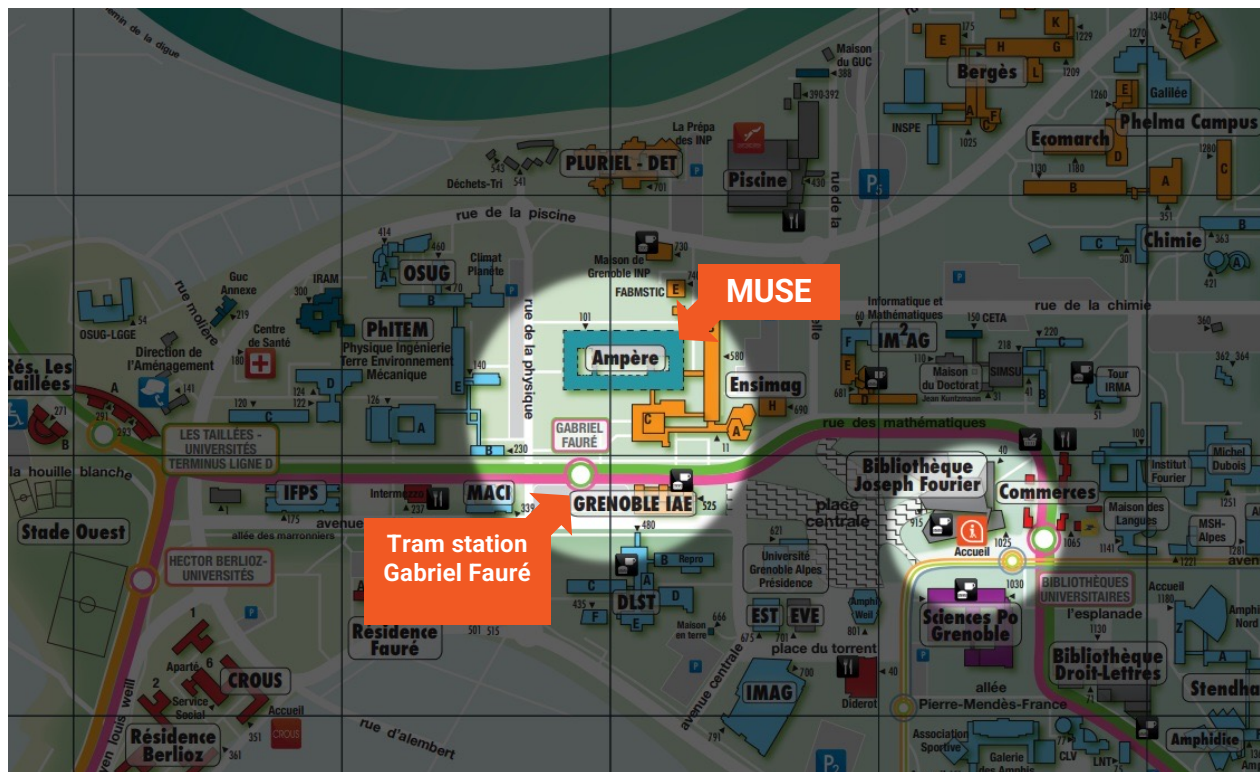
ENSIMAG (Building A, B & H) (Building E & D)
681, rue de la passerelle – CS 40700
38028 Grenoble Cedex
Tram B ou C, station Gabriel Fauré

IM²AG : (Building F)
60, rue de la chimie – CS 40700
38028 Grenoble Cedex
Tram B ou C, station Gabriel Fauré



MUSE – Maison Universitaire des Services à l'Étudiant

MUSE – Building



MUSE – Services

Regroupement de services au sein d'un bâtiment réhabilité (Halle Ampère) sur le campus de Saint-Martin-d'Hères

Des services de l'Université Grenoble Alpes

- Service Accueil Accompagnement iCampus
- International Students & Scholars Office (ISSO)
- Centre de santé universitaire
- Service Accueil Handicap
- Service Initiatives étudiantes
- Service universitaire des activités physiques et sportives
- Service Culture
- Pôle entrepreneuriat étudiant « Pépite Ozer »
- Fab-Lab MASTIC

ISSO – International Students & Scholars Office

ISSO – International Students & Scholars Office



A service of Université Grenoble Alpes entirely dedicated to international students, doctoral students, researchers and their accompanying family.

New International Students

- You have just arrived?
You need help to get settled?
Throughout the months of August and September, the UGA's International Students & Scholars Office (ISSO) organizes information sessions, online or on campus, to help you with all the different steps to take upon arrival: opening a bank account, mandatory insurances and health coverage, visa validation, CAF housing allowance...
- Info sessions calendar: <https://international.univ-grenoble-alpes.fr/getting-organized/international-students-your-arrival-and-settling-in-grenoble-1091485.kjsp?RH=1602595314069>
Do not hesitate to visit the section 'Getting organized' on the UGA international web portal, as well as the welcome pack dedicated to new students:
- UGA international web portal: <https://international.univ-grenoble-alpes.fr/getting-organized/>
- Welcome Pack: <https://international.univ-grenoble-alpes.fr/resources/welcome-pack-international-students-and-doctoral-students/>

New International Students

Orientation events

[Accueil](#) > [Actualités](#) > [Agenda](#)



- Réunions de bienvenue pour les étudiants internationaux à leur arrivée, s'installer à Grenoble/Valence,
- Information meetings: prepare for your arrival, settling in Grenoble/Valence
- Visites de la ville et du campus,
- City and campus tours,
- Sorties et rencontres entre étudiants,
- Student outings and meetings,
- Forum des sports etc.
- Sports forum etc.

[Grenoble](#) / [Valence](#)

Guides and fact sheets

[Ressources](#) > [Pack d'accueil - Étudiants et doctorants internationaux](#)



Prepare for your stay and get settled, checklist etc.

IntEGre Student Association


integre-grenoble.org
[Discord](#) / [Facebook](#) / [Instagram](#)



Grenoble. Welcome activities, student gatherings, language tandem etc.

Intercultural Quiz


[Venir](#) > [Apprendre le français](#) > [Quiz interculturels](#)



- Campus Grenoble/valence
- Vie à Grenoble/valence life
- Généralités General information

Buddy program

buddysystem.eu/fr/register




Meet local students and discover the campus and life.

<https://international.univ-grenoble-alpes.fr/>


Health centers for students

Rentrée 2023-24



 A health and prevention centre open to all university students :

General medicine, psychology, gynecology...

 Access to care **without advance payment**



Two address :

- in Saint Martin D'Hères
Building MUSE

- *in Grenoble*
10 rue Vassieux en Vercors



Online appointment booking for most consultations

(imperative: use the university email address)

FOR MORE INFORMATIONS
centre-sante.univ-grenoble-alpes.fr

Accompanying disability

1/3

- The UGA assists students with disabilities during their studies at the university
- Do you think you have a disability and need accommodations for your classes and/or exams?

Do you need :

Extra time for exams?

The assistance of a secretary to read and write?

To use special equipment?



- [Make your request for accommodation](#) online via the website of the Service Accueil Handicap
 - Make an appointment with an approved doctor who will validate your entry into the disability scheme
- Grenoble: University Health Centre
- The Service Accueil Handicap will work with you to draw up your support plan
 - Your component will decide on the best possible accommodation

Accompanying disability

3/3

For any questions :

➤ IM2AG

Disability referent : Bérengère DUC berengere.duc@univ-grenoble-alpes.fr

➤ ENSIMAG

Disability referent : Christophe Picard : christophe.picard@grenoble-inp.fr

At the [Service Accueil Handicap](#) : +33 4 76 74 85 75

accueil-sah@univ-grenoble-alpes.fr

Pour prendre un rdv médical :

➤ [Centre de Santé Universitaire](#) : +33 4 76 82 40 50

	septembre	octobre	novembre	décembre	janvier
08:00					
09:00	LATIN REBOUL G.	PHYSIQUE-CHIMIE GAUDRI F.	MATHÉMATIQUES SIMON A.		
10:00	MATHÉMATIQUES SIMON A.	SCIENCES DE LA VIE ET D... TESSIER A.	ITALIEN L1 LEVY G. [#ITAGR.1]		
11:00	HISTOIRE-GÉOGRAPHIE JOLY A.	ARTS PLASTIQUES MOHRER C.	HISTOIRE-GÉOGRAPHIE JOLY A.		
12:00	ÉDUCATION PHYSIQUE ET ... FAVIER E.	ITALIEN L1 LEVY G. [#ITAGR.1]	FRANÇAIS REBOUL G.		
13:00					
14:00	FRANÇAIS REBOUL G.	MATHÉMATIQUES SIMON A.		LATIN REBOUL G.	
	ANGLAIS LV1 MILLOT P.	EPI (étude des colonnes) DEJEAN Y.		1 2 3 ACC hist-géo MOREAU C. [#ACC HGR.2]	
	EPI (métamorphoses) TESSIER A.				
	SCIENCES DE LA VIE ET D... TESSIER A.			EPI (étude des colonnes) TESSIER A. [#EP.1]	

ADE STUDENT Your schedule in real time

Rentrée 2023-24
SAP

Contact : cellule-ade@univ-grenoble-alpes.fr

Your Schedule ADE

- Check your UGA Mailbox on LEO
<https://leo.univ-grenoble-alpes.fr>

- To consult your schedule : ADE
 - **I have my AGALAN login details**
<https://leo.univ-grenoble-alpes.fr/leo-intranet-des-etudiants/emploi-du-temps-1065728.kjsp?RH=8631794101180600>

 - **I haven't my AGALAN login details**
<https://www.univ-grenoble-alpes.fr/formation/admissions-et-inscriptions/candidater-et-s-inscrire/etape-4-emploi-du-temps/>

How do I view my schedule on ADE ?
Follow the online tutorial

Application Campus UGA

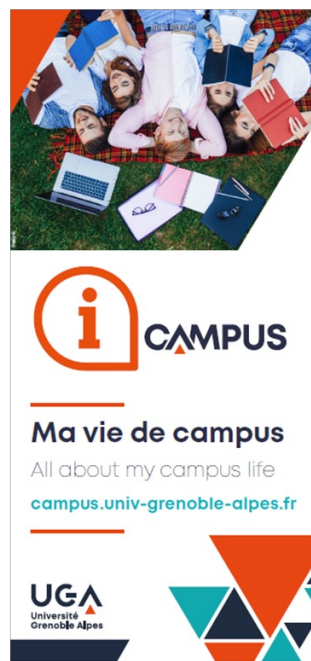
➤ [Follow the online tutorial](#)

The screenshot displays the 'ADE ETUDIANTS' web interface. At the top, it says 'ADE ETUDIANTS' and 'Votre emploi du temps en temps réel'. Below this, there are two links: 'Tutoriel : utilisation ADE' and 'Vidéo : J'explique ADE'. The main content is divided into three sections:

- CONSULTATION WEB / Intranet**: 'Visualisation de l'emploi du temps de la formation sur l'année'. It includes a small calendar preview and login options: 'Fai mes identifiants Agalma' and 'Je n'ai pas mes identifiants'.
- SYNCHRONISATION AGENDA**: 'Visualisation de l'emploi du temps personnalisé sur l'année via votre agenda'. It features a 'Téléchargez le tutoriel' link and icons for a calendar and a refresh button.
- APPLI "CAMPUS UGA"**: 'Accès rapide à l'emploi du temps personnalisé sur 15 jours'. It shows a smartphone icon and download links for 'Google Play' and 'App Store', with 'IOS, Android, Web' listed below.

At the bottom, there is a contact link: 'Besoin d'aide ? sos-etudiants@univ-grenoble-alpes.fr'.

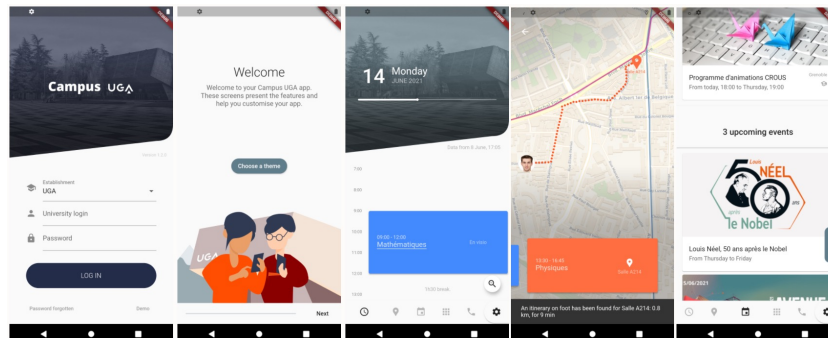
Flyers and Maps



Apply i Campus UGA



- ▶ Consulting the timetable
- ▶ Find your way around Campus, find a building, where to eat
- ▶ Agenda of cultural and sports events
- ▶ Monitor your print quota and swimming pool entrance



UNE CARTE



UNE APPLI "CAMPUS UGA"

Disponible sur
App Store

Disponible sur
Google play

UGA
Université
Grenoble Alpes



Other Services



➤ IT assistance (logins, connections, digital tools) :

sos-etudiants@univ-grenoble-alpes.fr

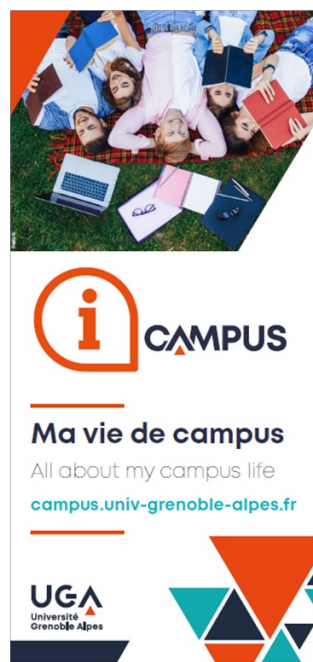
support.info@ensimag.fr

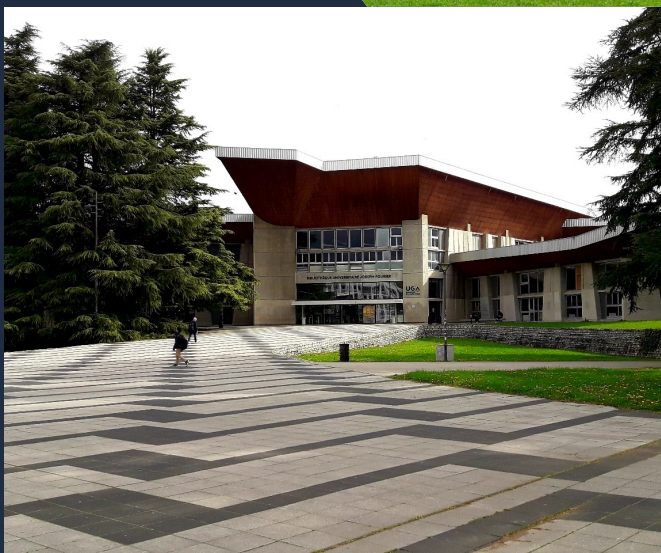
- Helpdesks and hotlines : +33 4 57 42 21 98 from Monday to Friday
- Digital Services Catalogue : <https://services-numeriques-etudiants.univ-grenoble-alpes.fr>

➤ Reprographics department :

[Reprographics : EasyRepro](#) and self-service : [Papercut](#)

Flyers and Maps





University libraries

BU Droit-Lettres (Law/Letter library)

BU Joseph-Fourier (Sciences library)

Rentrée 23-24

BAPSO – service de la formation des usagers

bapso-formation@univ-grenoble-alpes.fr

University libraries

BU Droit et Lettres, BU Joseph-Fourier

Hours 8am-7pm

- Until 10 pm from 18th September 2023(BUJF)
- Saturday 9am-5pm from 16th september 2023

– free entrance– relaxing– working –

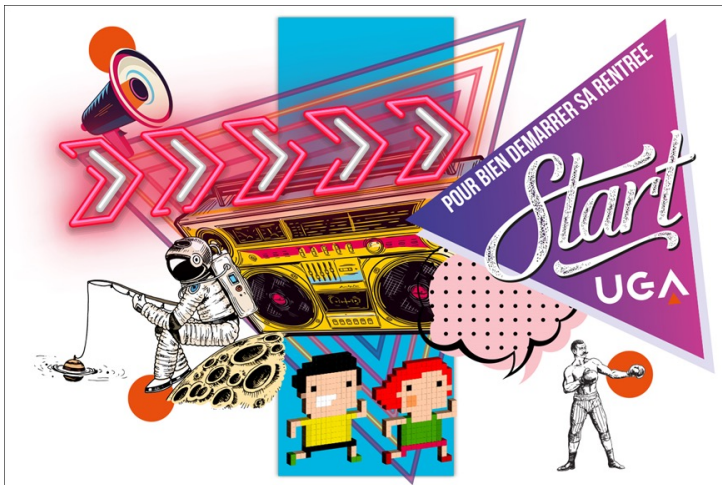
➤ UGA students

- copiers, book rooms for group work, consult online documentation, connect to computers...
- student card: to borrow books!

<https://bibliotheques.univ-grenoble-alpes.fr/bibliotheques/>



Start UGA From 12 to 14 September

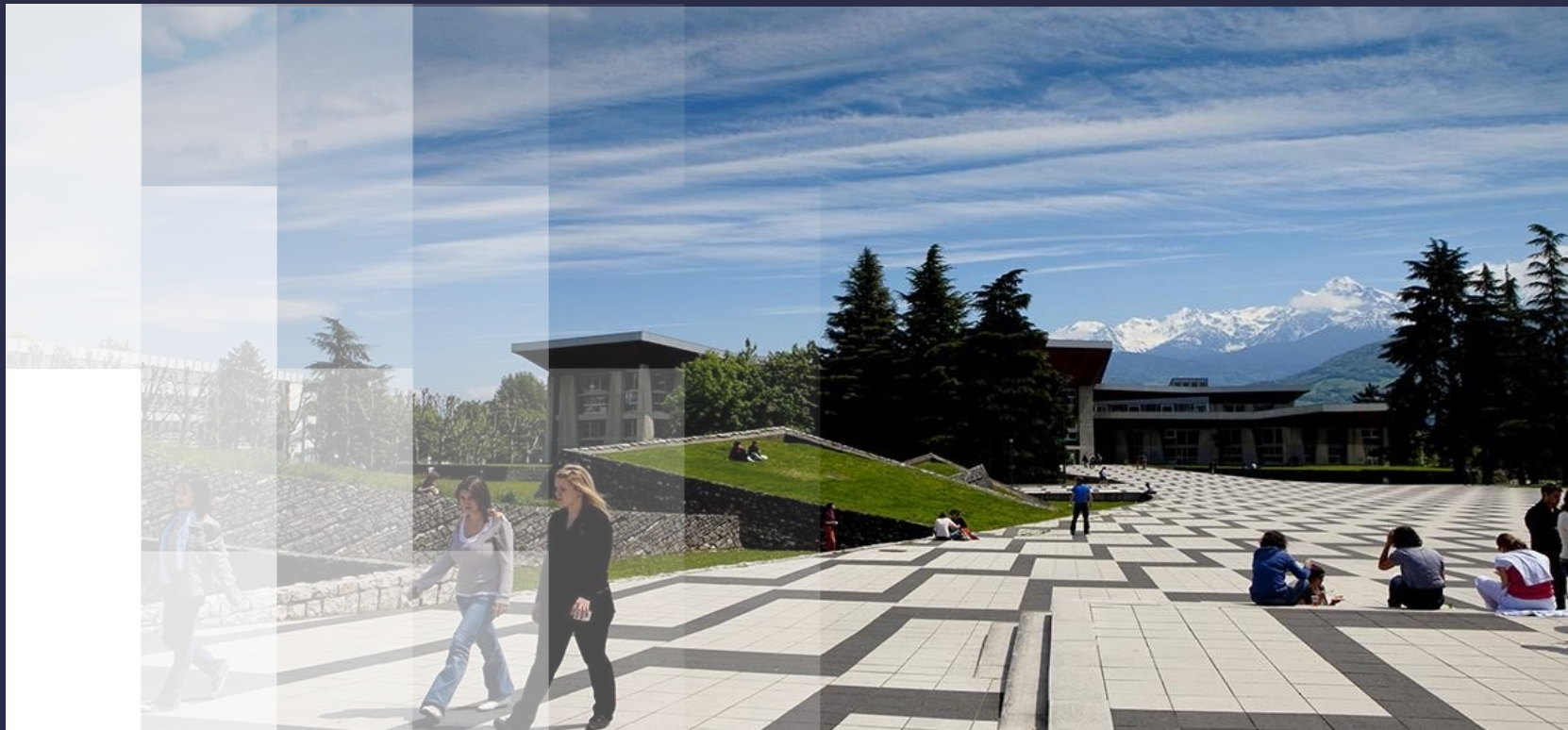


- ▶ **12th September : Place Centrale**
- ▶ **Forum Vie de Campus (services et partenaires Vie de Campus) 11am - 3pm**
- ▶ **Village des personnels 11am - 3pm**
- ▶ **Nuit des associations (stands et animations vie associatives) 5pm-8.30pm**

- ▶ **14th September :**
- ▶ **Forum Job étudiant (information et job dating) 1pm-6pm**
- ▶ **Sport Forum**
- ▶ **Temps festif étudiant et personnel**

Administrative procedure for registration at INP ENSIMAG

Complete procedure will be ON LINE (IA web)



HOW TO TRANSLATE THE ONLINE REGISTRATION WEBPAGES USING CHROME?

When you come across a page written in a language you don't understand, you can use Chrome to translate the page.

- On your computer, open Chrome.
- Go to a webpage written in another language.
- At the top, click **Translate**.
- Chrome will translate the webpage this one time.

<https://support.google.com/chrome/answer/173424?co=GENIE.Platform%3DDesktop&hl=en#:~:text=Translate%20webpages%20in%20Chrome&text=On%20your%20computer%2C%20open%20Chrome,the%20webpage%20this%20one%20time>.

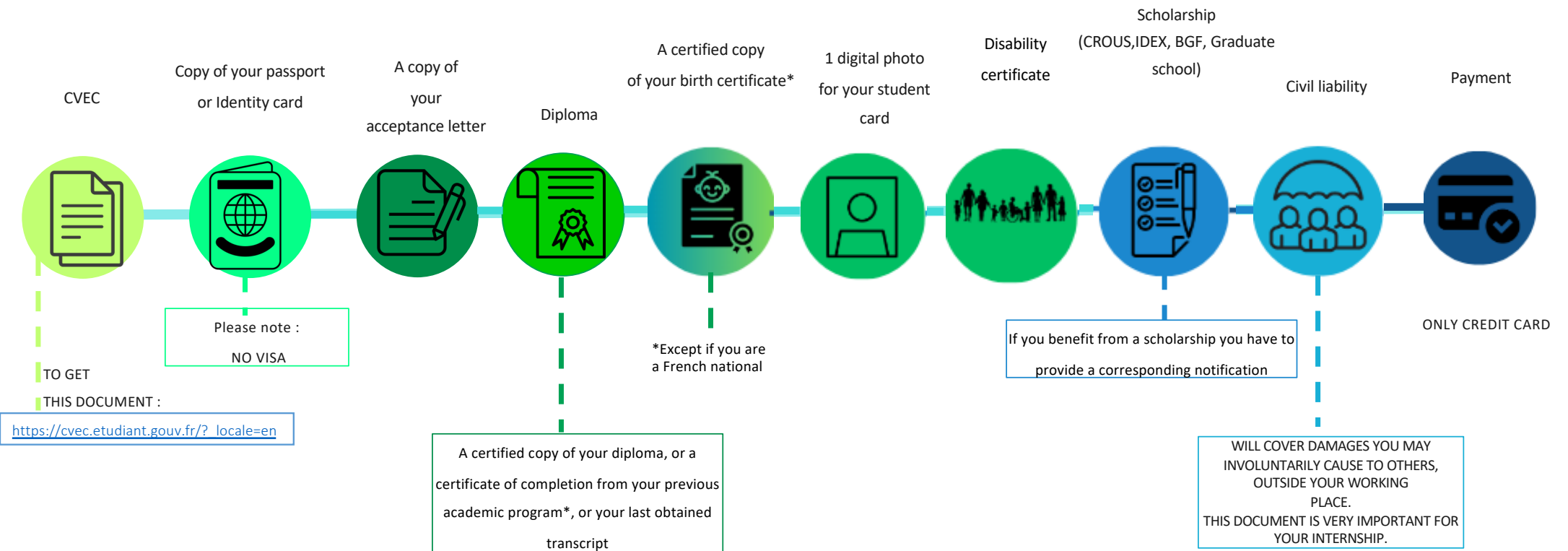
WHAT IS MANDATORY FOR YOUR ONLINE REGISTRATION?

Your OPI number (FSX.....) received by email from the registrar's office
An international credit card for payment of the fees (except scholarship notification specifying exemption : BGF, BES, embassy...)

If payment by international credit card is not possible, please do not proceed to online registration and contact your registrar's officer

All the requested documents in digital format (**donner référence du document où se trouve la liste**)

DOCUMENTARY PROOF



Important: an accredited translator must translate documents (in French or English)

Please go to : <https://www.grenoble-inp.fr/fr/formation/inscriptions-reinscriptions-en-ligne>
Select : 1 ère inscription

1ÈRE INSCRIPTION

Pièces nécessaires à votre inscription en ligne :

- Numéro INE : numéro figurant soit sur votre relevé de notes du baccalauréat français (n° INE ou BEA) soit sur votre ancienne carte d'étudiant.
- Carte bancaire pour procéder au paiement des droits.

[Procédez à votre inscription en ligne](#)



Inscription Administrative en Ligne

Information:
The server is accessible 7 days a week from 7:30 a.m. to 11:00 p.m. (payment by credit card with a maximum of 1500 euros)
The entry of your file will only be taken into account when the following message appears: "Your application has been taken into account" The duration of a standard registration is about 30 minutes.
Parts necessary for your online registration: - INE (reading the baccalauréat or the previous year's student card). - Your Certificate Contribution Student Life and Campus - Bank Card

Please identify:
Your pre-registration ID is as follows: For the CPC and the ESISAR: P20-n-PARCOURSUP Attention if your track record number is only 6 digits, you must add a zero: P200 - no. For the admitted on competition: CCP20-n-CCP (Competition File No.) For prep INP admissions (except Grenoble): CP-student number of your last institution.

Identifying:

Date of birth (jjmmaaaa):

Log with your OPI number (FSX.....)

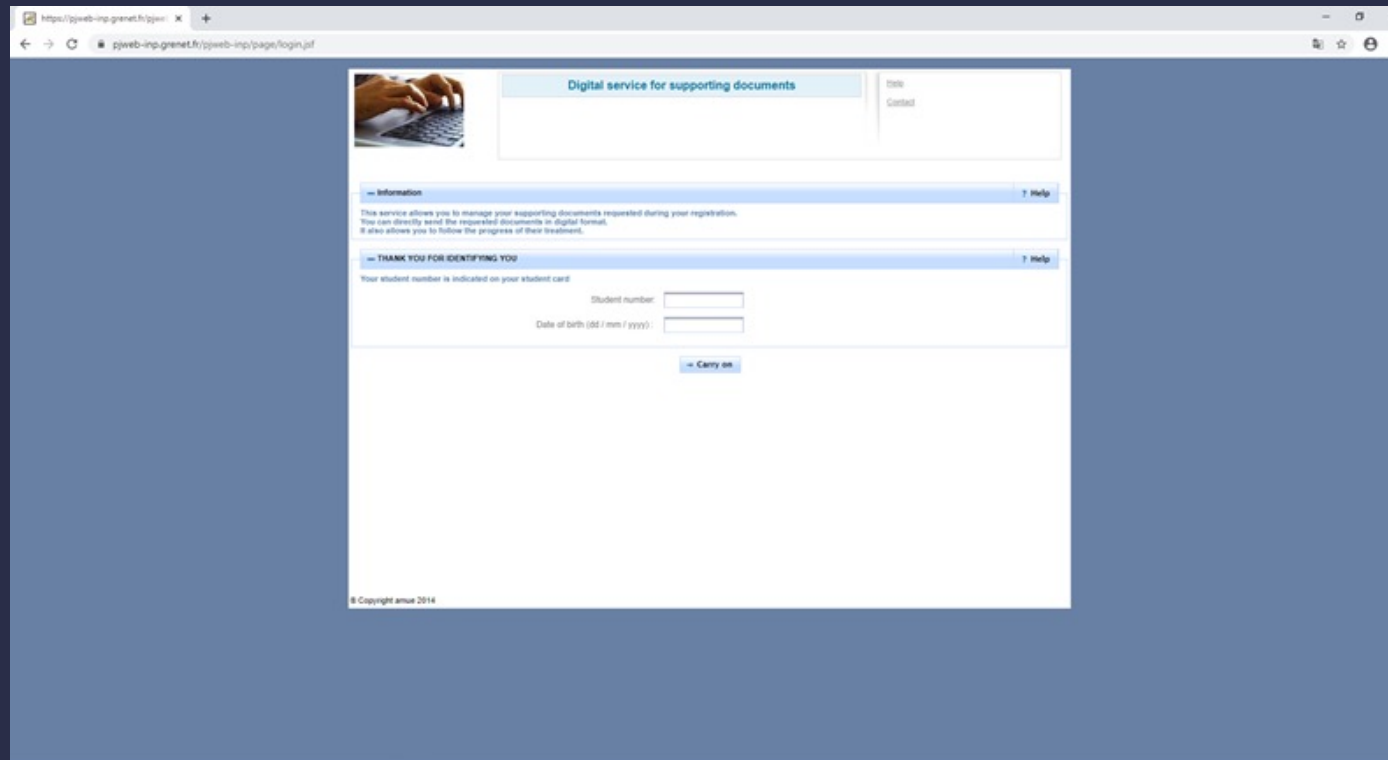
Fill your birthdate without dash (not english format)

Next steps to register :

Upload all your documents in digital format on the following link (SNPJ)

<https://pjweb-inp.grenet.fr/pjweb-inp/page/login.jsf>

Resize your photo with the included tool if necessary



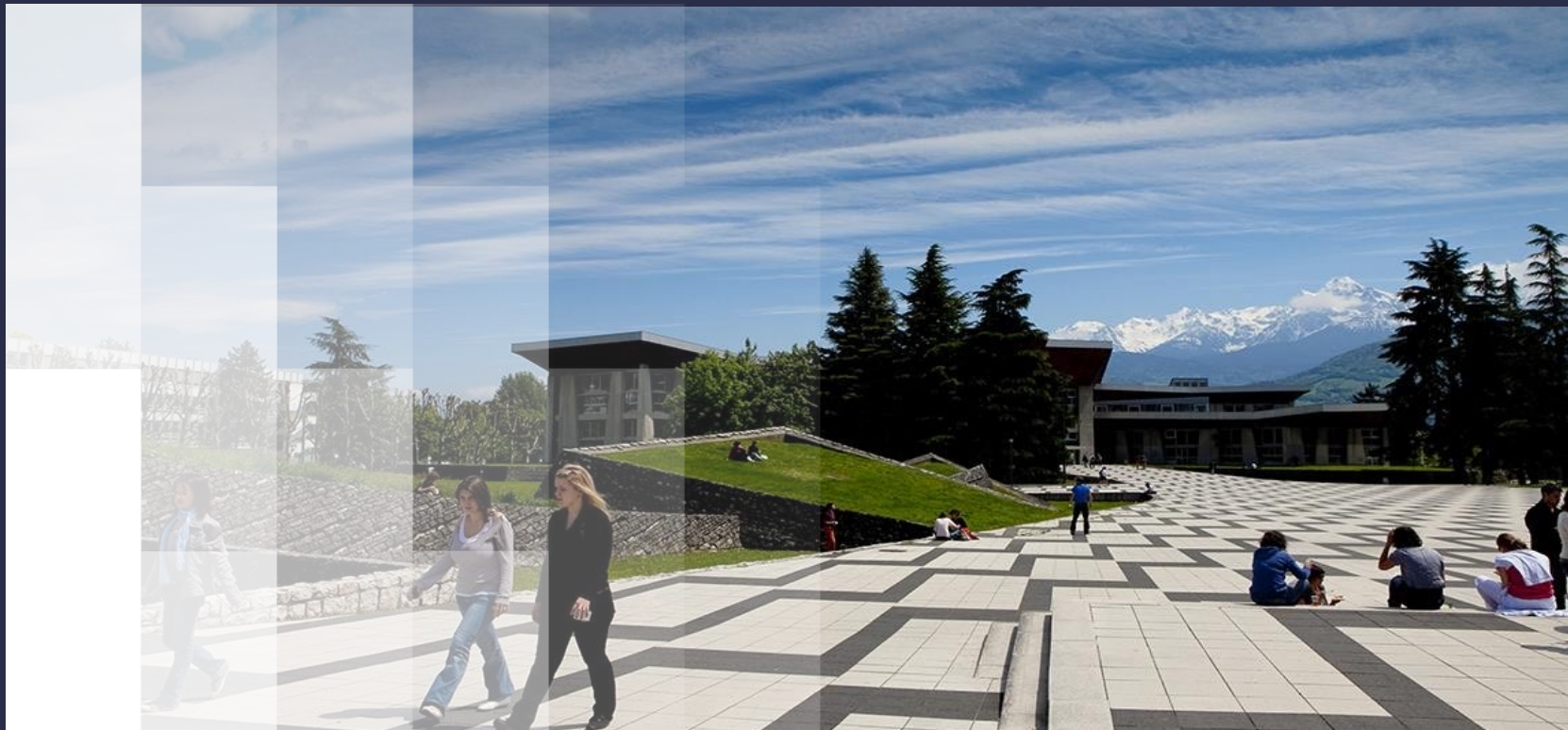
The screenshot shows a web browser window with the URL <https://pjweb-inp.grenet.fr/pjweb-inp/page/login.jsf>. The page content includes:

- A header section with a navigation menu containing "Digital service for supporting documents" and "Info Contact".
- An "Information" section with a "Help" link. The text reads: "This service allows you to manage your supporting documents requested during your registration. You can directly send the requested documents in digital format. It also allows you to follow the progress of their treatment."
- A "THANK YOU FOR IDENTIFYING YOU" section with a "Help" link. The text reads: "Your student number is indicated on your student card".
- Two input fields: "Student number" and "Date of birth (dd / mm / yyyy)".
- A "Carry on" button.
- A footer with the text "© Copyright amue 2014".

- Next steps to register :
 - Fill online the electronics form relating to personal data as well as to the charter and Regulations, whose access link will be communicated to you at the end of your registration
 - To read and download : documents to keep, useful during the academic year
<https://www.grenoble-inp.fr/fr/formation/documents-a-lire-et-telecharger>
- Next step to obtain your student card :
 - Come at Ensimag registrat's office (building E room E001 ground floor) in order to verify and sign your registration document



Administrative procedure for registration at UGA IM²AG



DOCUMENTARY PROOF



CVEC

COPY OF YOUR
PASSPORT OR ID

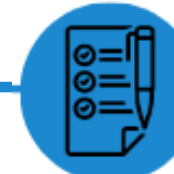
REGISTRATION FORM +
Admission letter

CIVIL LIABILITY

SCHOLARSHIP
(CROUS, IDEX, BGF,
GRADUATE SCHOOL)

Diploma
Transcript

PAYEMENT



PLEASE NOTE :
NO VISA

ONLY
ELIGIBLE STUDENTS

ONLY CREDIT CARD

TO GET THIS
DOCUMENT:

https://cvec.etudiant.gouv.fr/?_locale=en

- CIVIL STATUS
- ADDRESS
- LAST ESTABLISHMENT ATTENDED
- SITUATION PREVIOUS YEAR
- OTHER ESTABLISHMENT ATTENDED FOR THE CURRENT YEAR

WILL COVER DAMAGES YOU MAY INVOLUNTARILY CAUSE TO OTHERS, OUTSIDE YOUR WORKING PLACE.
THIS DOCUMENT IS VERY IMPORTANT FOR YOUR INTERNSHIP***.

For Master 1 : Transcript of records and Bachelor's degree or equivalent
For Master 2 : Transcript of records Master 1 and Bachelor's degree or equivalent

CIVIL LIABILITY



WHERE TO GET IT?

STUDENT INSURANCE PROVIDERS (SMERRA, LMDE), BANKS, INSURANCE COMPAGNIES...
GENERALLY INCLUDED IN THE « MULTI-RISQUES » HOUSING INSURANCE ****



<https://smerra.fr/>



MON PREMIER ASSUREUR

<https://www.mae.fr/>



<https://heyme.care/fr>

YOU HAVE **UNTIL OCTOBER 2ND, 2023** TO GIVE THE CIVIL LIABILITY.

BY EMAIL : stephanie.leyssieux@univ-grenoble-alpes.fr M1 MOSIG

berengere.duc@univ-Grenoble-alpes.fr M1 AM

OR

YOU CAN COME AT THE RECEPTION IN STUDENT MANAGEMENT OFFICE GROUND FLOOR BUILDING IM²AG.

PLEASE NOTE : WHEN YOU'RE ARRIVED YOU NEED TO EXPLAIN THAT YOU ARE IN M1 MOSIG OR M1 AM,

THIS PAPER IS CIVIL LIABILITY CERTIFICATE FOR FANNY OR BERRY.

Useful links

UFR IM2AG website: <https://im2ag.univ-grenoble-alpes.fr/>

UGA website: <https://univ-grenoble-alpes.fr/>

ENSIMAG website: <https://ensimag.grenoble-inp.fr/>

UGA student portal <https://leo.univ-grenoble-alpes.fr> where you will find:

- Links to your email address
- Link to the ADE schedule
- Account management (password change, etc.)

IM2AG Moodle: <https://im2ag-moodle.univ-grenoble-alpes.fr/>

ENSIMAG Moodle: <https://moodle.caseine.org/>

Thank you for your attention !