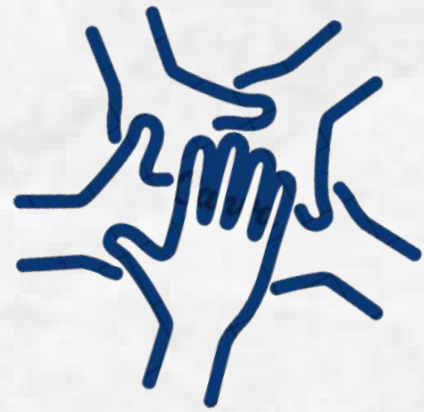


WELCOME TO GRENOBLE



OUR TEAM



**Stephanie
LEYSSIEUX**

IM²AG



stephanie.leyssieux@univ-grenoble-alpes.fr



UFR IM²AG–building F ground floor



Elise ROS

ENSIMAG



elise.ros@grenoble-inp.fr



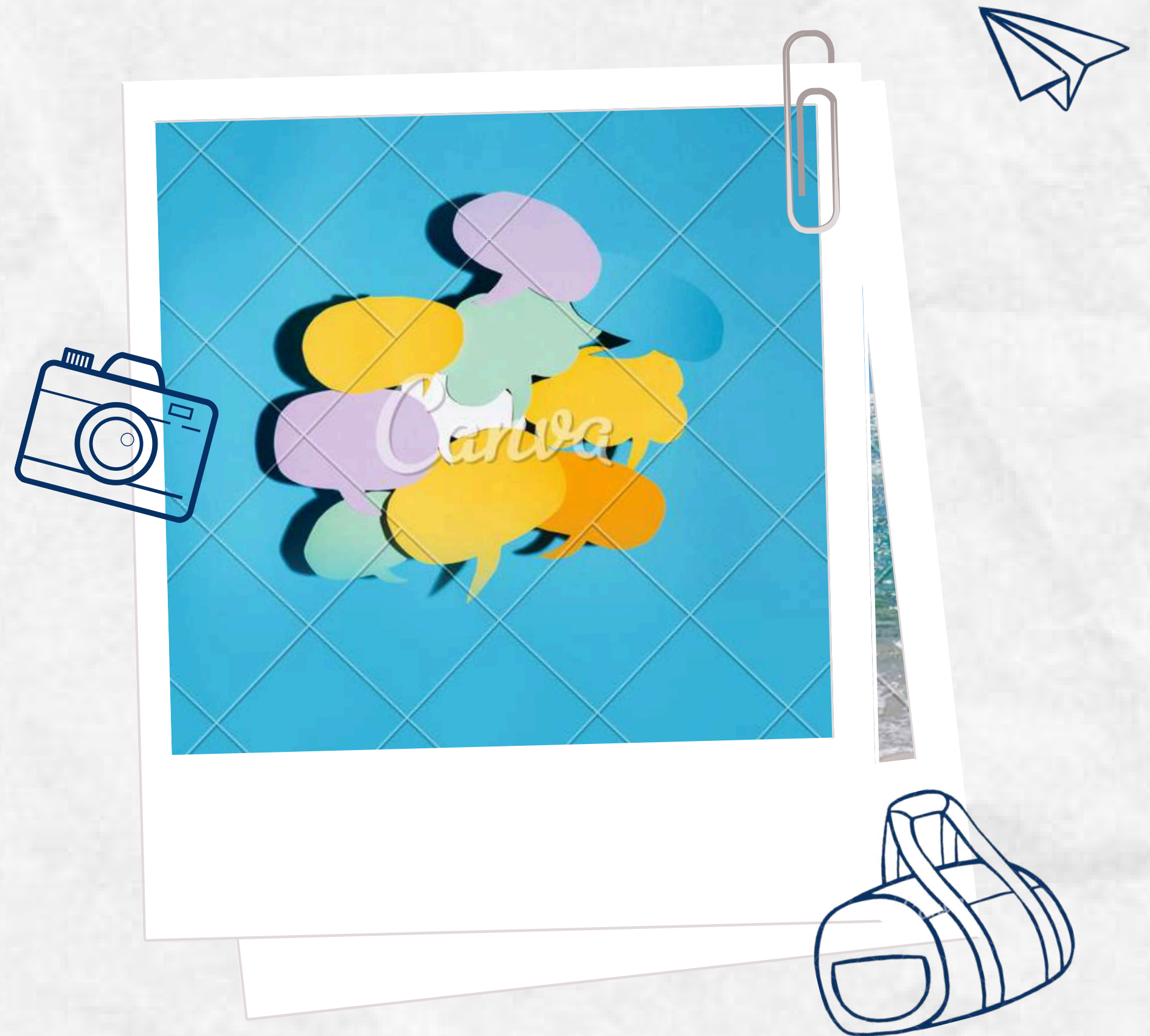
ENSIMAG

DISCORD GROUP

Join the Incoming group. Within it, you'll find several lounges where various topics can be discussed.

Please ensure to use your first and last name only nicknames are not permitted.

[Sign up here !](#)



MUSE

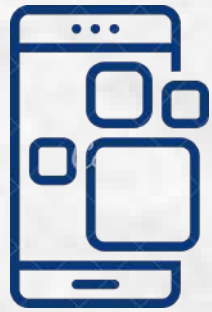
MAISON UNIVERSITAIRE DES SERVICES À L'ETUDIANT



[Let's GO !](#)



GROUPING OF SERVICES



Service
iCampus



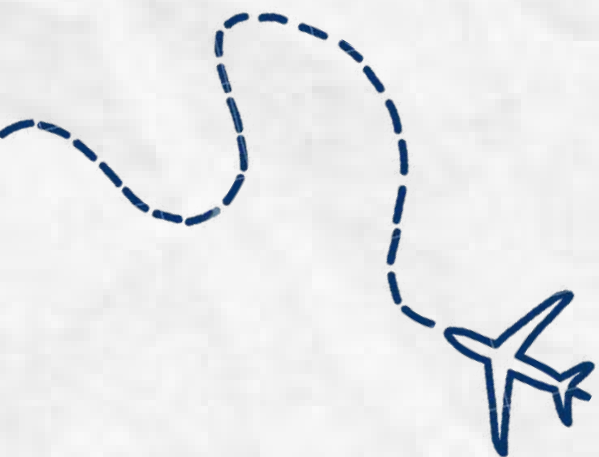
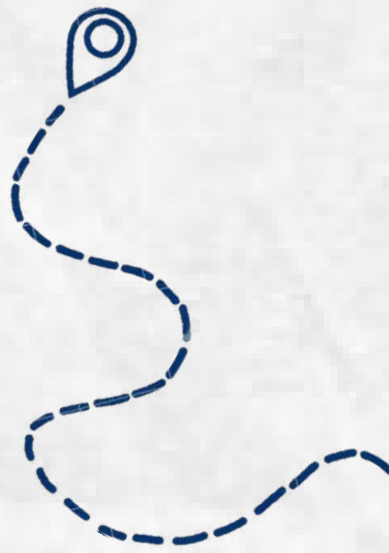
International
Students &
Scholars Office
(ISSO)



Health centers for
students

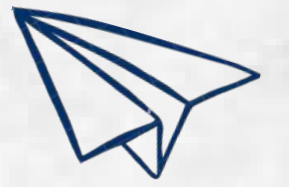


Disability
Services



ISSO

INTERNATIONAL STUDENTS & SCHOLARS OFFICE



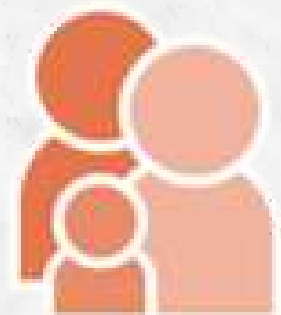
Information

Welcome

Support



International



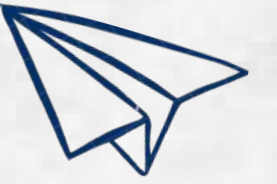
Students
PhD students
Researchers
Families



Accommodation
Residence permits
Insurances
Health insurances
CAF
Daily life ...

A service of Université Grenoble Alpes entirely dedicated to international students, doctoral students, researchers and their accompanying family.

HOUSING ALLOWANCE



► **All students* can apply for CAF if they :**

Stay in France for more than 3 months

Have a bank account in France or in the SEPA

► **The amount of the allowance depends on**

- the type of accommodation
- the rent
- your financial resources
- your personal situation...

www.caf.fr



Demande en ligne*
Online application*

***If bank account
in the SEPA :
paper application**

HEALTH CENTERS FOR STUDENTS



A health and prevention centre open to all university students :

General medicine, psychology, gynecology...

Access to care without advance payment



Documents to be provided

Student card mandatory

Carte vitale, (European card)
Certificate of health insurance

Access to care remains free of advance payment, even in the absence of these documents.

**in Saint Martin D'Hères
Building MUSE**

Online appointment booking for most consultations
(imperative: use the university email address)

For more informations

ACCOMPANYING DISABILITY



The UGA assists students with disabilities during their studies at the university

Do you believe you have **a disability and require accommodations** for your classes and/or exams?

Do you need :

- Extra time for exams?
- The assistance of a secretary to read and write?
- To use special equipment?

NEXT →

ACCOMPANYING DISABILITY



Make your request for accommodation online via the website of the Service Accueil Handicap



Make an appointment with an approved doctor who will validate your entry into the disability scheme



The Service Accueil Handicap will work with you to draw up your support plan. Your component will decide on the best possible accommodation.



**1st semester
until
7 November**

**2nd semester
20 March**



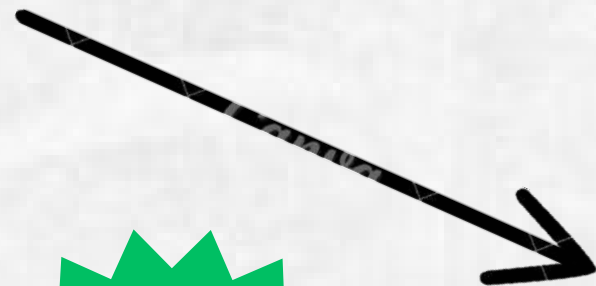
ACCOMPANYING DISABILITY



I send the document
by e-mail to the
disability adviser



Bérengère DUC
(Berry)
berengere.duc@univ-grenoble-alpes.fr



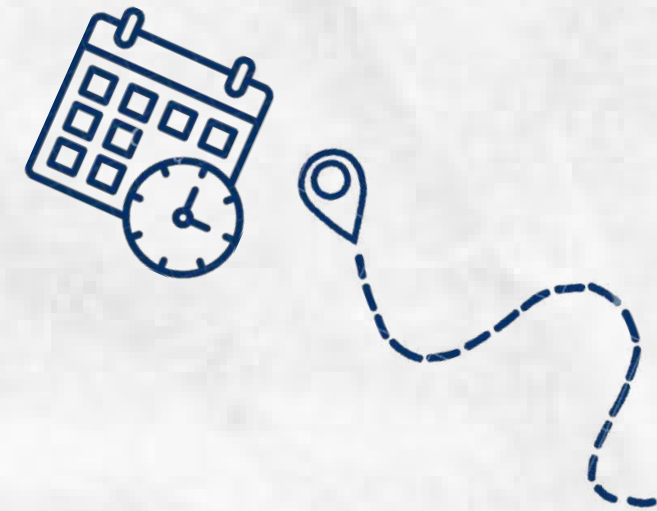
Moufida Derbal
moufida.derbal@grenoble-inp.fr

ADE STUDENT

YOUR SCHEDULE IN REAL TIME

To consult your schedule : ADE

[Click here](#)



ADE STUDENT

YOUR SCHEDULE IN REAL TIME

To consult your schedule : ADE

I have my AGALAN login details

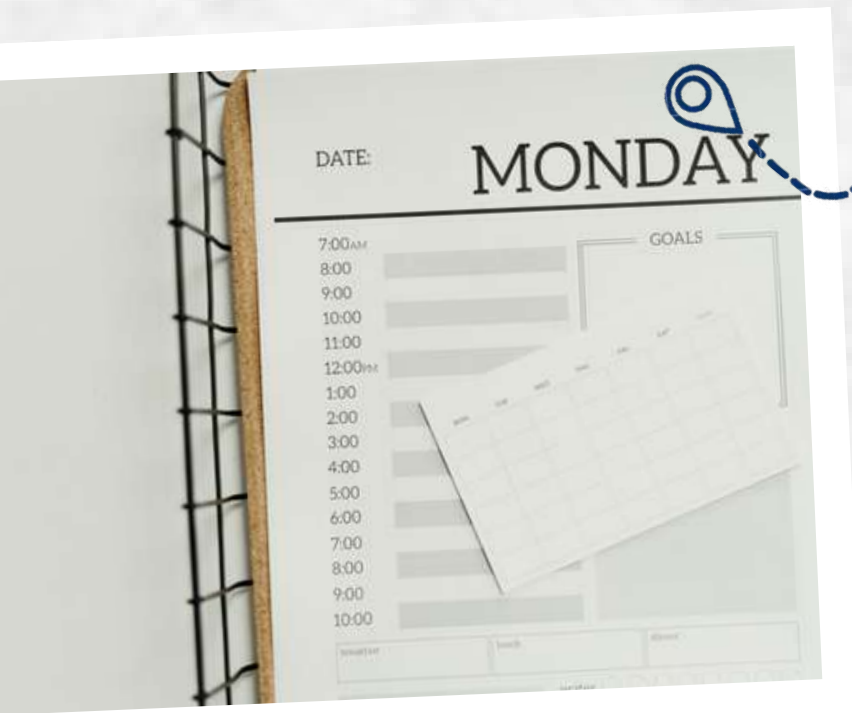


[Click here](#)

I haven't my AGALAN login details



[Click here](#)

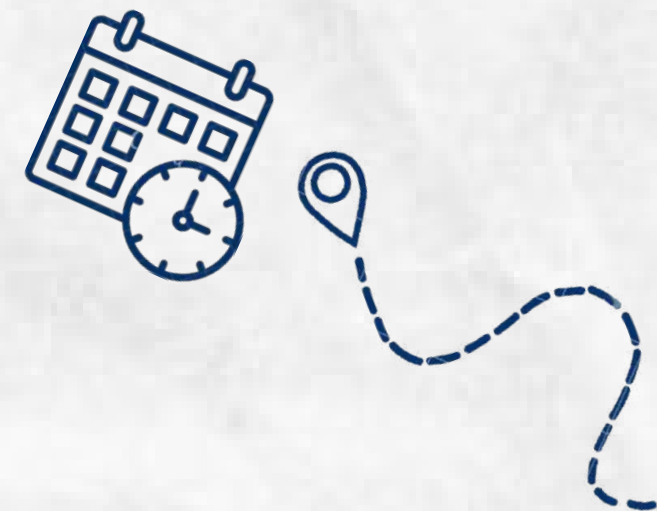
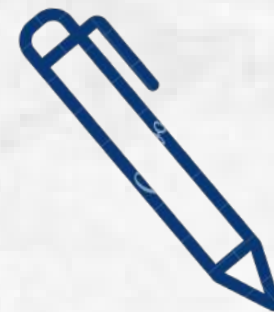


ADE STUDENT

YOUR SCHEDULE IN REAL TIME

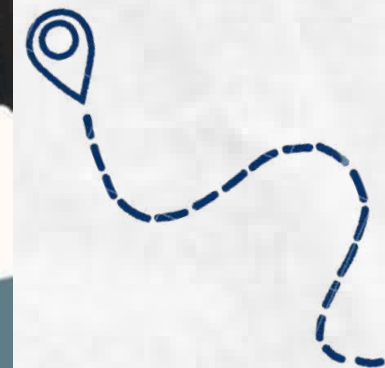
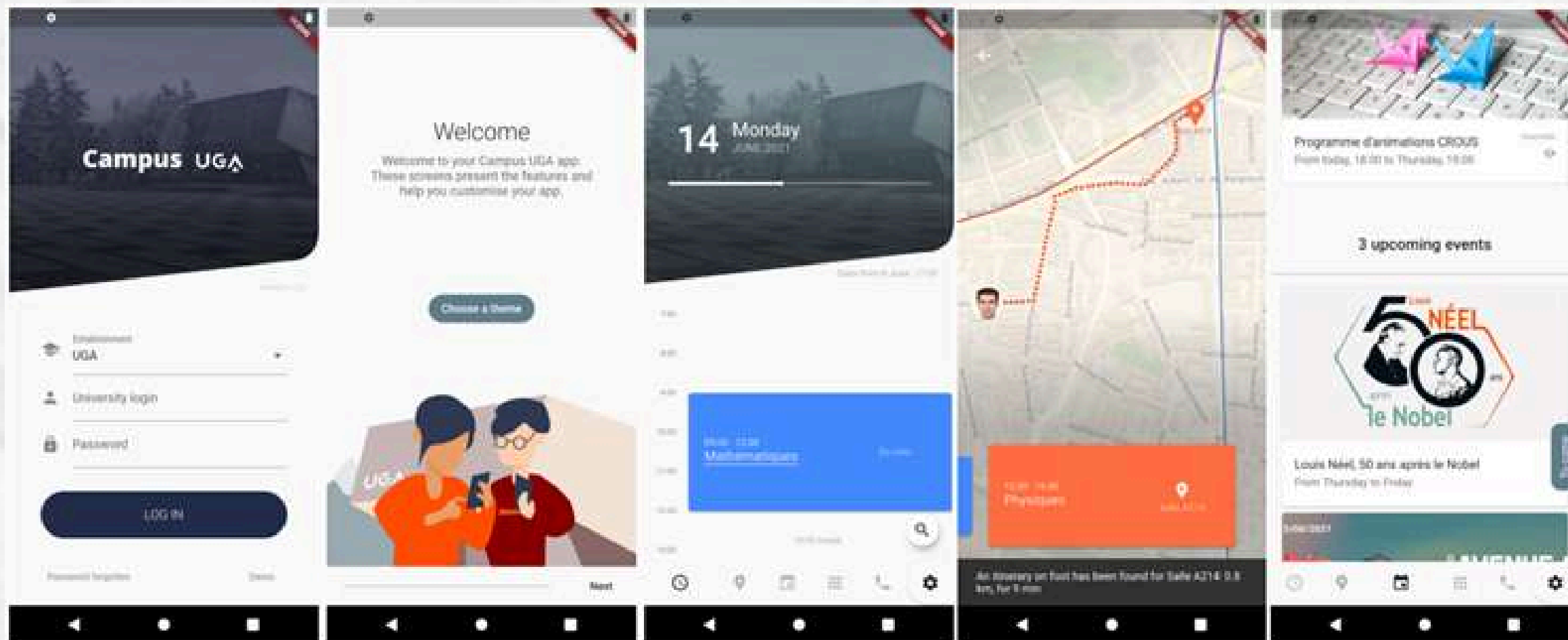
How do I view my schedule on ADE ?
Follow the online tutorial

[FOLLOW THE ONLINE TUTORIAL](#)



APPLY CAMPUS UGA

- ▶ Consulting the timetable
- ▶ Find your way around Campus, find a building, where to eat
- ▶ Agenda of cultural and sports events
- ▶ Monitor your print quota and swimming pool entrance



OTHER SERVICES

IT assistance (logins, connections, digital tools) :

sos-etudiants@univ-grenoble-alpes.fr

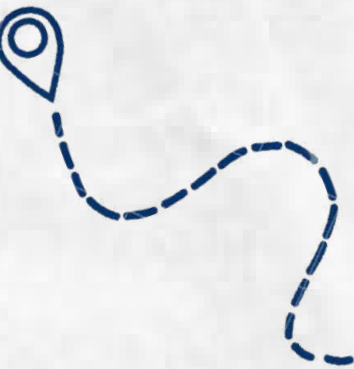
support.info@ensimag.fr

Helpdesks and hotlines : +33 4 57 42 21 98 from Monday to Friday

Digital Services Catalogue : <https://services-numeriques-etudiants.univ-grenoble-alpes.fr>

Reprographics department :

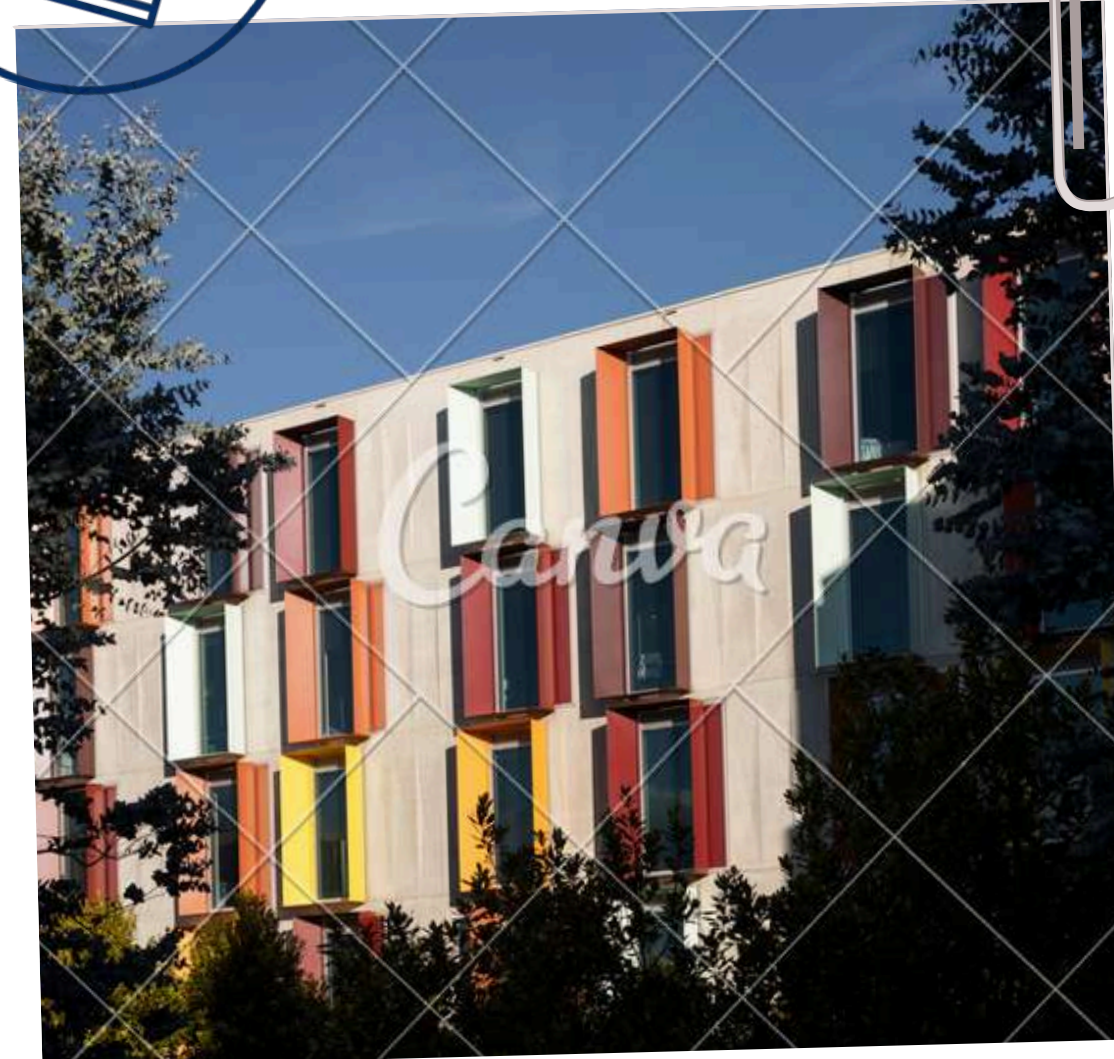
Reprographics : EasyRepro and self-service : Papercut

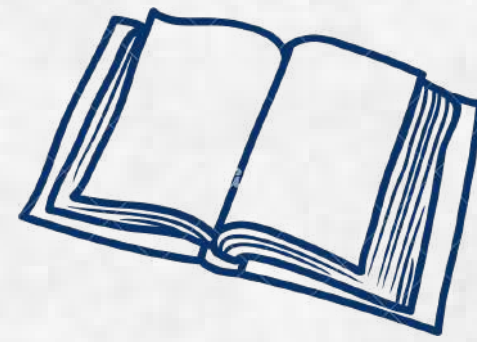


OUR ACCOMMODATIONS

To simplify your search, the International Students & Scholars Office (ISSO) of Université Grenoble Alpes offers to be your sole contact for accommodation, acting as a "gateway".

[Let's GO !](#)





UNIVERSITY LIBRARIES

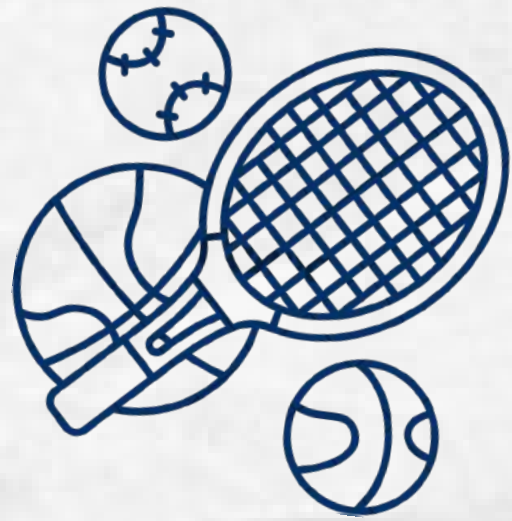
 BU Droit-Lettres (Law/Letter library)
BU Joseph-Fourier (Sciences library)

 Hours 8 am -7 pm
Until 10 pm from 16th September 2024 (Sciences library)
Saturday 9 am -5 pm from 14th September 2024

- free entrance- relaxing- working -

copiers, book rooms for group work, consult online documentation, connect to computers...
with your student card: to borrow books!





SPORT

from Thursday 5 September 2024 from 9 a.m. until
Wednesday 11 September 2024 at 12 p.m.



[U-Glisse](#)

[WEBSITE](#)



[Sports Association](#)



[U-Grimpe](#)



[Swimming pool](#)

FRENCH COURSE



Register on
our form
before
9 September



offers you
20 hours



IM²AG supports
financially these
classes, if your
registration is
validated your
presence
becomes
mandatory



CUEF

MOVING AROUND TOWN



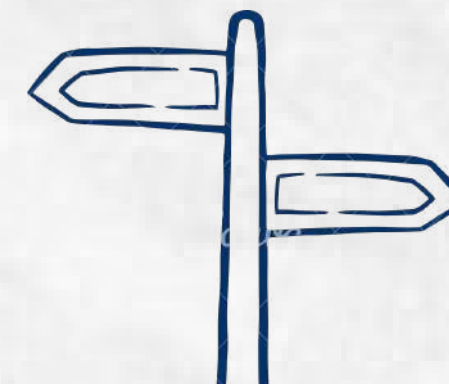
Métro *vélo*

<https://www.veloplus-m.fr/>

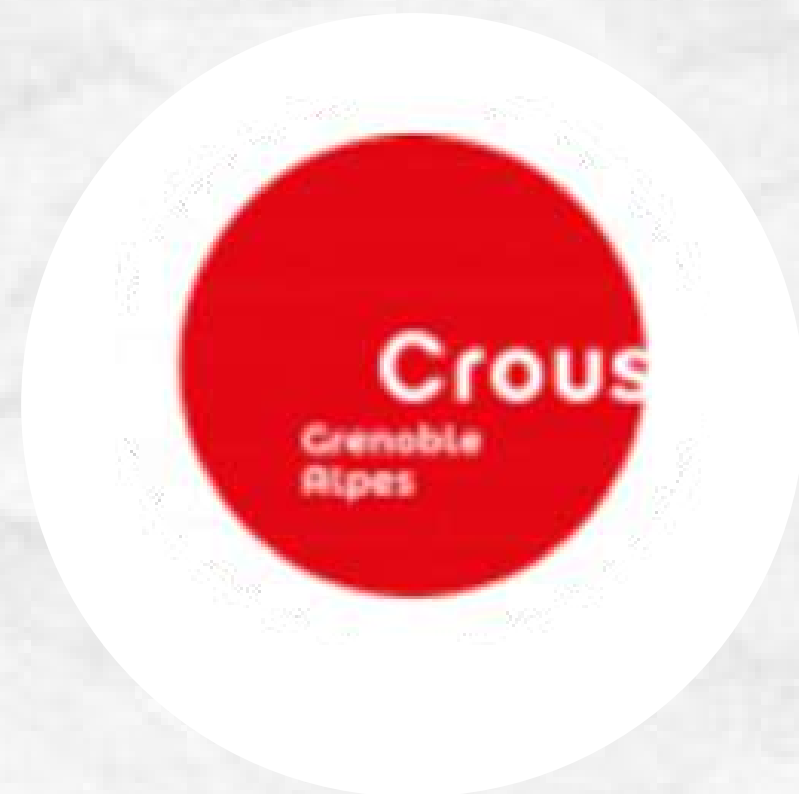


<https://www.reo-m.fr/>

**! Fine of minimum 61€ !
if no valid ticket**



UNIVERSITY RESTAURANTS

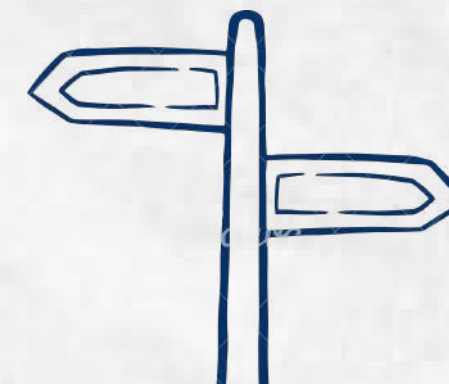
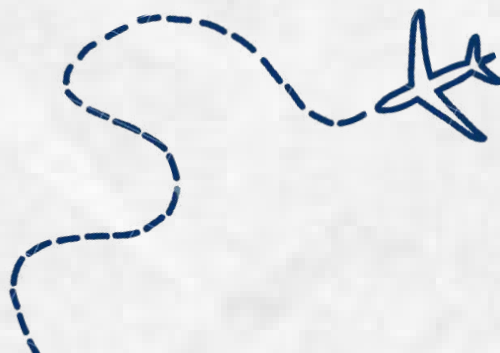


Find all university restaurant [here](#)

Pay with your student card with the IZLY app or with bank card (show your student ID to get student discount).

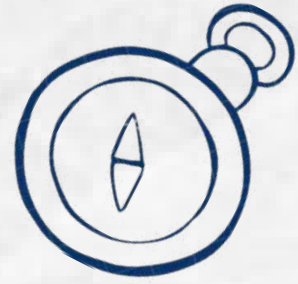
Activate your account with the e-mail sent to student mailbox. Then fill in your account via bank account or credit card or in presence at a counter.

More information on [IZLY](#) and [CROUS](#)



ADMINISTRATIVE PROCEDURE



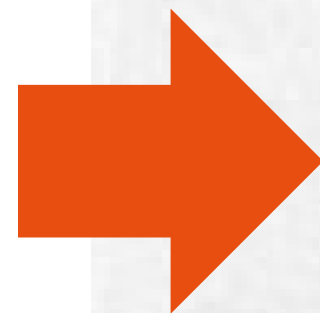


REGISTRATION

IA Web



Complete procedure will be
ON LINE (IA web)



WHAT IS MANDATORY FOR YOUR ONLINE REGISTRATION?

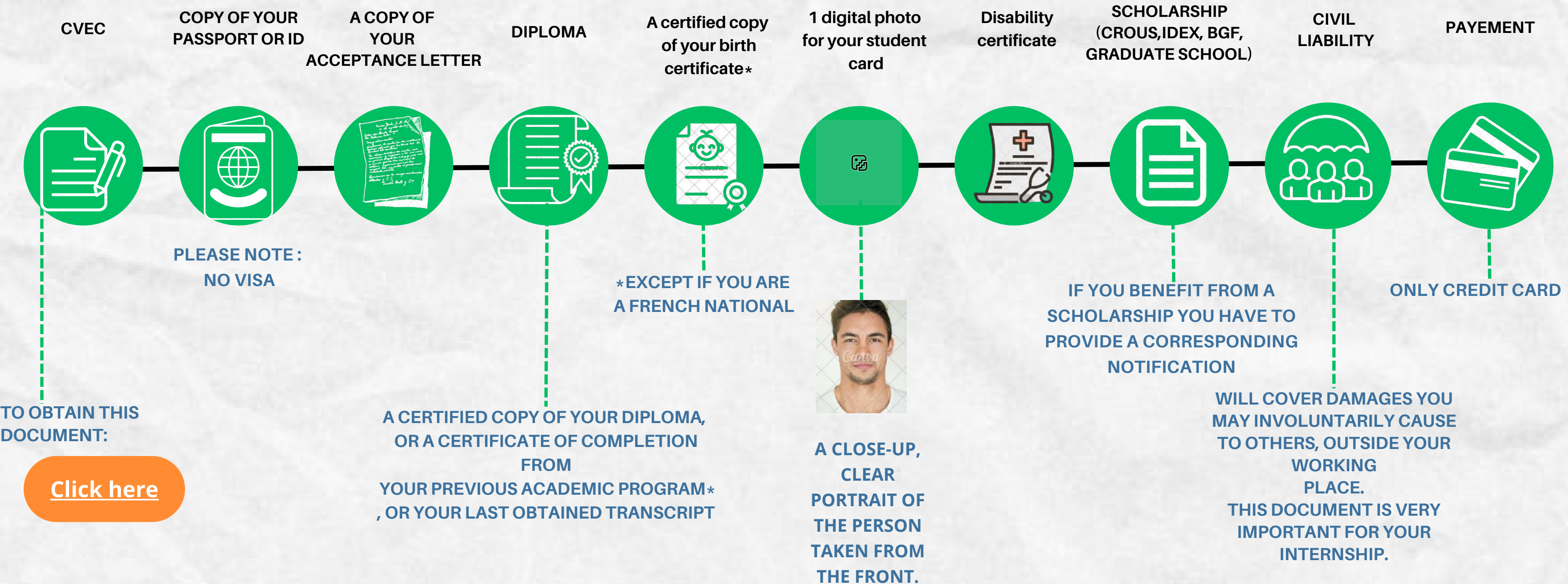
Your **OPI number (FSX.....)** received by email from the registrar's office

An international credit card for payment of the fees (except scholarship notification specifying exemption: BGF, BES, embassy...)

If payment by international credit card is not possible, please do not proceed to online registration and contact your registrar's officer

All the requested documents in digital format

DOCUMENT PROOF



* Important: an accredited translator must translate documents (in French or English)

REGISTRATION

Please go to :



<https://www.grenoble-inp.fr/fr/formation/inscriptions-reinscriptions-en-ligne>



Select : 1ère inscription

1ÈRE INSCRIPTION

- Pièces nécessaires à votre inscription en ligne :
- Numéro INE : numéro figurant soit sur votre relevé de notes du baccalauréat français (n° INE ou BEA) soit sur votre ancienne carte d'étudiant.
 - Carte bancaire pour procéder au paiement des droits.

Procédez à votre inscription en ligne



Next steps to register : Upload all your documents in digital format on the following link



<https://pjweb-inp.grenet.fr/pjweb-inp/page/login.jsf>

Resize your photo with the included tool if necessary



REGISTRATION

Next steps to register :

Fill online the electronics form relating to personal data as well as to the charter and Regulations, whose access link will be communicated to you at the end of your registration

To read and download : documents to keep, useful during the academic year
<https://www.grenoble-inp.fr/fr/formation/documents-a-lire-et-telecharger>

Next step to obtain your student card :

- Come at Ensimag registrar's office (building E room E001 ground floor) in order to verify and sign your registration document

SPECIAL STATUTS

There are a number of different schemes to help students make the most of their studies: high-level artists and top athletes, students with a specific commitment, student entrepreneurs, students with disabilities, etc.

If you are concerned or would like to make a request to adapt your study plan, please contact the Director of studies as soon as possible: direction.etudes@ensimag.fr

YOUR COMMITMENTS

Let's build together an inclusive environment for all

An essential principle: respect for all

- Your fellow students
- Administrative staff
- Professors and lecturers

No form of discrimination/harassment will be tolerated

- At Ensimag and IM²AG during class hours
- But also outside Ensimag and IM²AG (during sports activities, parties, etc)

Failure to comply with these principles may result in referral to the Grenoble INP and UGA Disciplinary Section, as well as possible legal action.

Are you a victim or witness of an assault or incident?

- A system for reporting sexual and gender-based violence, harassment and discrimination has been set up on campus.

The system is common to the whole university site and outsourced (it guarantees impartiality and confidentiality).

- An online reporting form is available on the UGA website: www.univ-grenoble-alpes.fr.
- Victims will be contacted for a confidential meeting
- Other non-university services are also available, including France Victime 38, phone number: 1 16 006.



Flashez moi !

ADMINISTRATIVE PROCEDURE



DOCUMENT PROOF

1. CVEC

To obtain this document:

[Click here](#)



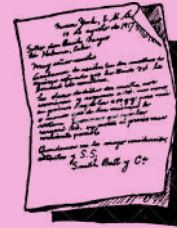
2. YOUR PASSPORT OR ID

FORMAT.PDF



PLEASE NOTE :
NO VISA

3. YOUR ACCEPTANCE LETTER



4. REGISTRATION FORM

[Click here](#)



5. DIPLOMA AND TRANSCRIPT

FORMAT.PDF

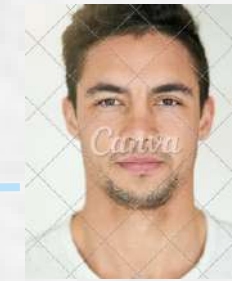


For Master 1 : Transcript of records and Bachelor's degree or equivalent

For Master 2 : Transcript of records Master 1 and Bachelor's degree or equivalent

6. ONE DIGITAL PHOTO FOR YOUR STUDENT CARD.

FORMAT .JPEG



a close-up, clear portrait of the person taken from the front.

7. SCHOLARSHIP

IDEX, GRADUATE SCHOOL, BGF, CROUS



If you benefit from a scholarship you have to provide a corresponding notification

8. REQUEST FOR EXEMPTION OF THE DIFFERENTIATED ENROLMENT FEES

[Click here](#)

Only non-EU Students

NEXT

**9. SEND ALL YOUR DOCUMENTS IN
.ZIP FORMAT BY ENTERING NAME
+ FIRST NAME IN THE SUBJECT
LINE.**



IM2AG-SERVICE-FORMATION@UNIV-GRENOBLE-ALPES.FR

10. APPOINTMENT WITH IM²AG

**UPON YOUR ARRIVAL IN GRENOBLE AND (AFTER YOUR
INSTALLATION),
PLEASE FILL IN THE FORM AVAILABLE BEFORE AUGUST 31 TO
MAKE AN APPOINTMENT WITH US.**

[HERE](#)



**11. PAYEMENT
ONLY CREDIT CARD**



REGISTRATION



As soon as your administrative registration is completed, you will receive an email before the 22nd of July from our service detailing your start of term.

You will have access to

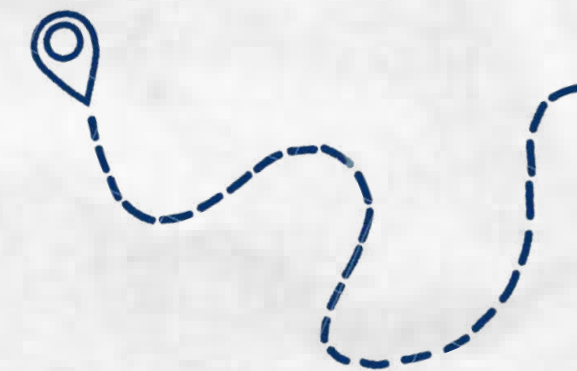
MAILBOX LEO

[Click here to get access](#)

Check your UGA mailbox frequently

SCHEDULE

[Application Campus UGA](#)





Check out the integration events

In order to get the year off to a flying start, you are invited to participate to the orientation program. The program includes activities such as information meetings, discovery tours, get-togethers to meet other students etc.



[CONSULT](#)

EVENTS



THANK YOU

